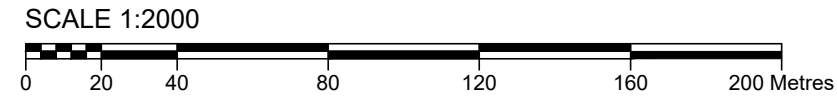


**SUBDIVISION PLAN OF PART OF THE NORTH WEST 1/4 OF SECTION 2 TOWNSHIP 23
OSOYOOS DIVISION YALE DISTRICT EXCEPT:**

PLAN EPP133747

**(1) THOSE PARTS SHOWN ON PLAN ATTACHED TO DD 1953D (2) PART DESCRIBED IN
DD 169668F (3) PLANS 12349, H764, H16596, KAP83101 AND EPP76079;
AND PART OF THE SOUTH WEST 1/4 OF SECTION 11 TOWNSHIP 23 OSOYOOS
DIVISION YALE DISTRICT EXCEPT: (1) THOSE PARTS SHOWN ON PLAN ATTACHED TO
DD 1953D (2) PLANS 10273, 18883, H764, H16596 AND KAP83101 (3) PARCEL A (E10197)**

BCGS 82E.094



The intended plot size of this plan is 560mm in width by 864mm in height (D size) when plotted at a scale of 1:2000.

LEGEND

- Found Standard Iron Post
- Placed Standard Iron Post
- ▲ Found Control Monument
- ⊙ Found Standard Capped Post
- RM Reference Marker

This plan shows one or more witness posts which are not set on the true corner(s).

Integrated Survey Area No. 4, City of Kelowna NAD83 (CSRS) 2002.0

Grid bearings are derived from GNSS observations and are referred to the central meridian of UTM Zone 11 (117° West Longitude).

The UTM coordinates and estimated absolute accuracy achieved are derived from dual frequency GNSS observations to CANNET Active Control Station BC_Kelowna.

The coordinates and absolute accuracies shown on this plan are a result of an independent and accurate GNSS survey and do not represent official published coordinates.

This plan shows horizontal ground-level distances, unless otherwise specified. To compute grid distances, multiply ground-level distances by the average combined factor of 0.9998992. The average combined factor has been determined based on an ellipsoidal elevation of 398 metres.

This plan lies within the Regional District of Central Okanagan.

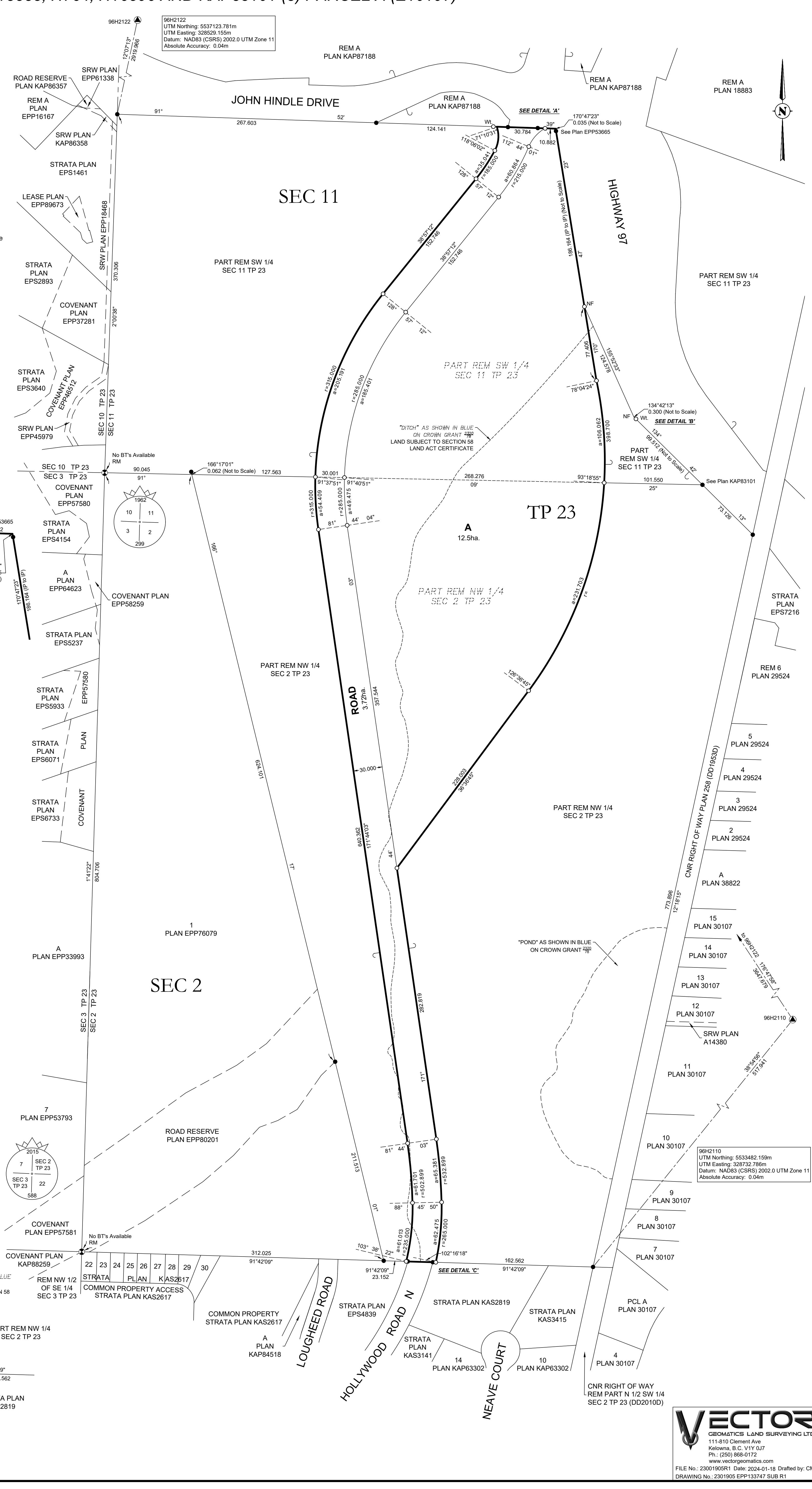
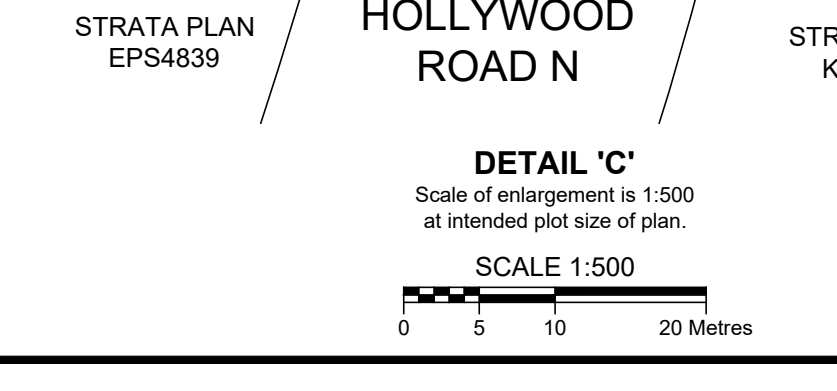
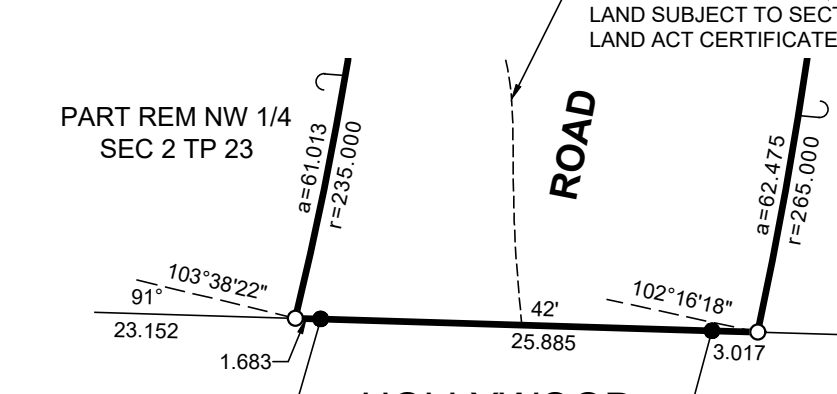
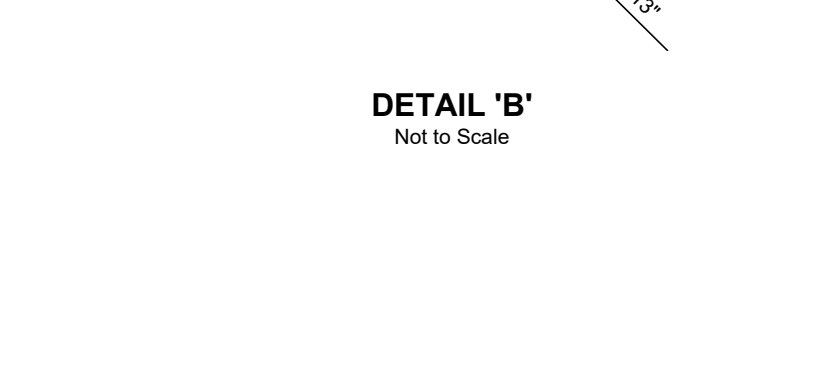
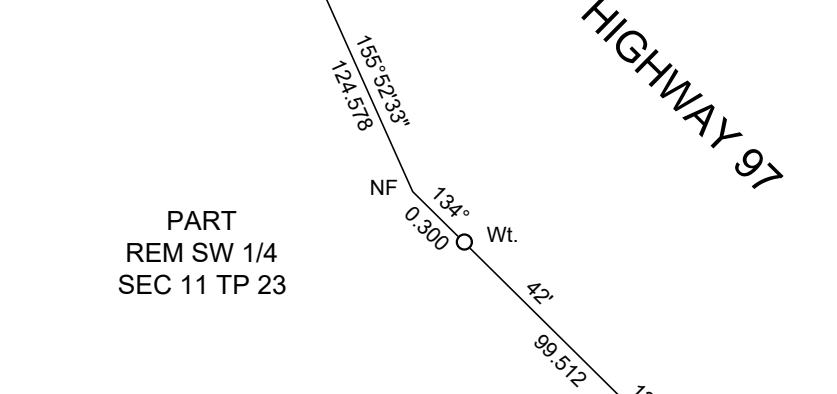
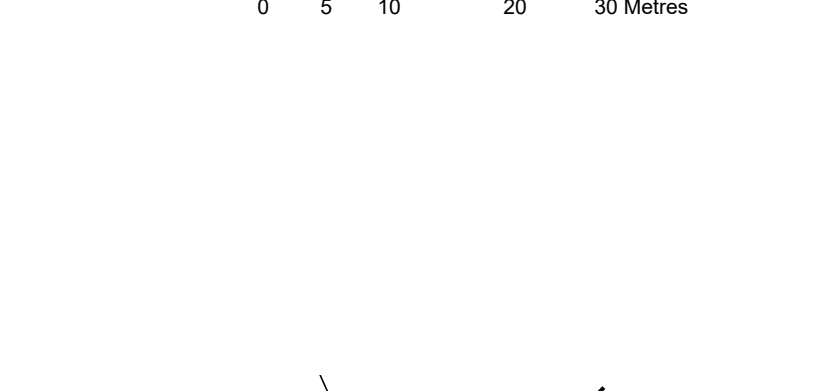
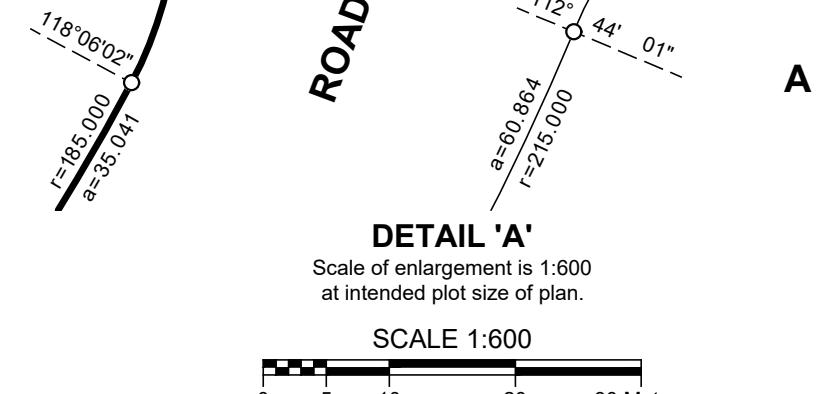
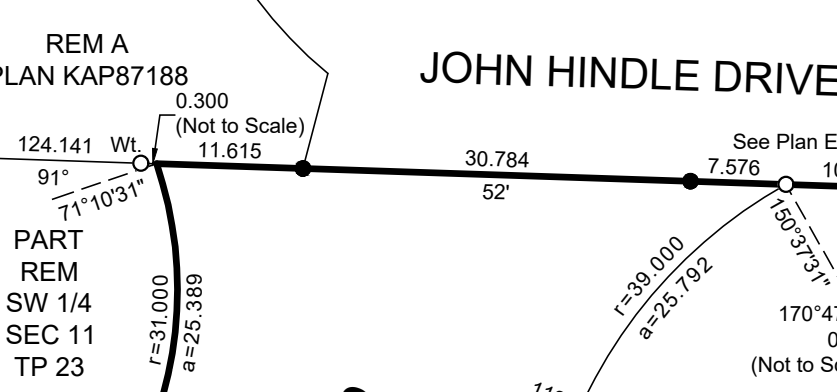
This plan lies within the jurisdiction of the Approving Officer for the City of Kelowna.

This plan lies within the Agricultural Land Reserve.

This plan shows land subject to a declaration under Section 58 of the Land Act. LTSA File # 0889959.

The field survey represented by this plan was completed on the 16th day of January, 2024.

Corey M. Doherty, BCLS 990



VECTOR
GEOMATICS LAND SURVEYING LTD.
111-810 Clement Ave
Kelowna, B.C. V1Y 0J7
Ph.: (250) 868-0172
www.vectorgeomatics.com
FILE No.: 23001905R1 Date: 2024-01-18 Drafted by: CM
DRAWING No.: 2301905 EPP133747 SUB R1